

Name \_\_\_\_\_  
Date: \_\_\_\_\_

Grade/ section \_\_\_\_\_

**Question 1: Fill in the blanks with the correct cell structure or organelle.**

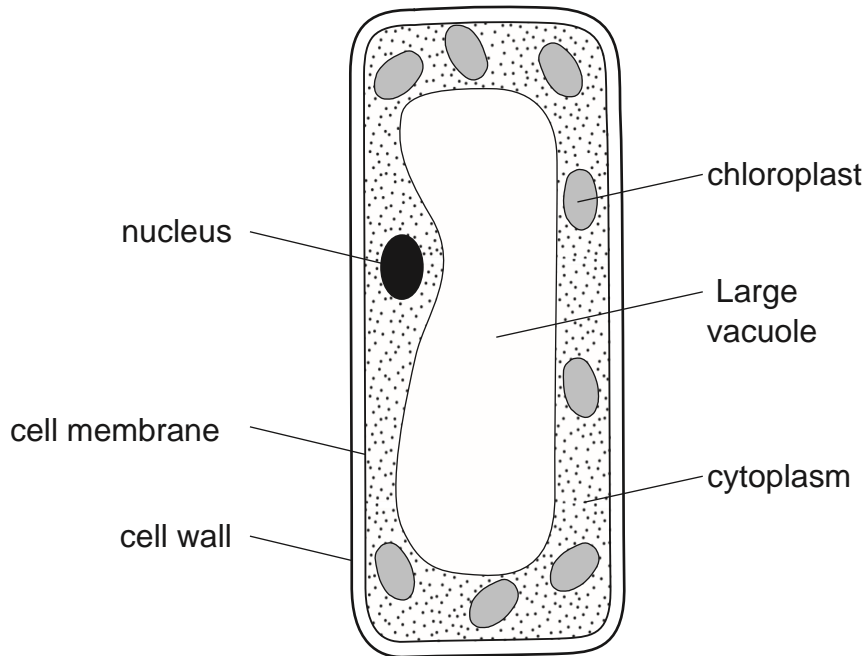
**(6 points)**

1. \_\_\_\_\_ help to make energy for the cell through the process of respiration.
2. \_\_\_\_\_ is a stiff cover which protects the plant cell and gives it its structure.
3. The \_\_\_\_\_ is a thin structure with selective permeability to different materials.
4. The \_\_\_\_\_ is a fluid - filled space contains the cell sap (water, food, waste).
5. A \_\_\_\_\_ breaks down invaders and old cells.
6. The \_\_\_\_\_ network of interconnected membranes that helps move substance within the cell.

**Question 2: Explain the following sentence: The Golgi apparatus acts like a packaging/ shipping and a storing office within the cell. (you can use the following words to help you form an explanation: proteins, vesicles, modify)**

**(3 points)**

**Question 3: Observe the plant cell diagram then answer the questions below.  
(5 points)**



- **This is a plant cell. Name three structures labeled in this picture that are found in most plant cells but not animal cells.**

1 \_\_\_\_\_

2 \_\_\_\_\_

3 \_\_\_\_\_

- **Name the part of the cell in which photosynthesis takes place.**

\_\_\_\_\_

- **Explain the function of the Nucleus.**

\_\_\_\_\_

**Question 4: Circle the right answer(s). (5 points)**

**1. Eukaryotic cells (choose all correct answers)**

- found in single cellular organisms only
- contain membrane bound nucleus
- found in single cellular and multicellular organisms
- DNA is suspended in the cytoplasm

**2. Cells are specialized because**

- they have special kinds of nucleus
- they do different functions
- Cells are not specialized, and they are all the same in the human body.

**3. Which of the following pairs incorrectly? (choose all that apply)**

- Mitochondria: energy supply
- Large Vacuole: storage
- Chloroplast: cell respiration
- Cell wall: protection and shape
- Cell membrane: protein synthesis
- Mitochondria: cell respiration

**Question 5: This is a picture of an amoeba, it is a single cell protozoon, and animal-like eukaryotic cell because of its ability to move (1 point)**



**State a reason why it cannot have a cell wall like plants cells**

---

**Bonus questions (optional) / (1 point)**

Can you explain why a piece of onion cells under a microscope does not look green? \_\_\_\_\_

Thank you!