

## Modified Assessment

Name \_\_\_\_\_

Grade/ section \_\_\_\_\_

Date: \_\_\_\_\_

**Question 1: Fill in the blanks with the correct cell structure or organelle. (Use the provided words below) (7 points)**

---

**Cell wall, Cell membrane, Mitochondria, Nucleus Endoplasmic reticulum,  
Large vacuole, Lysosome**

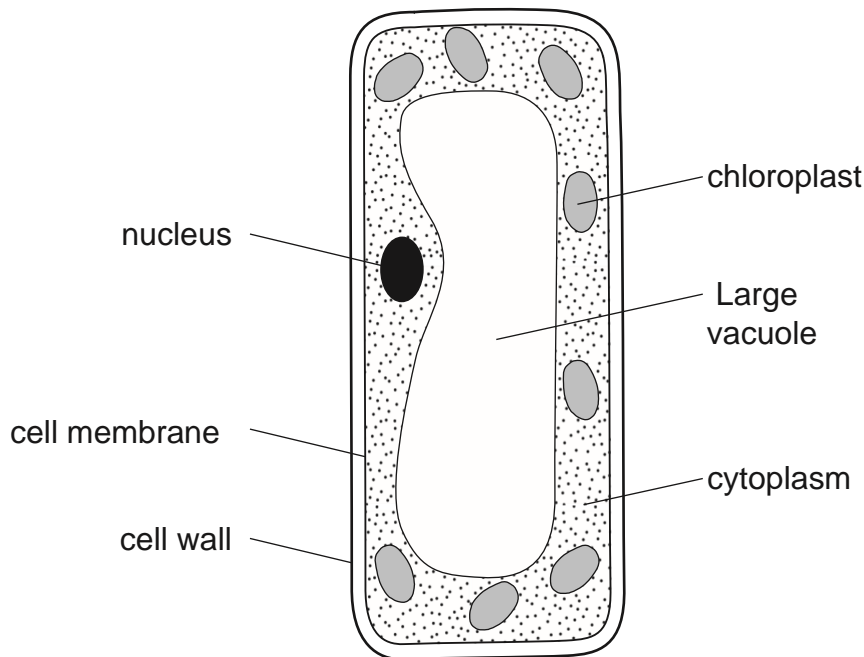
---

1. \_\_\_\_\_ help to make energy for the cell through the process of respiration.
2. \_\_\_\_\_ is a stiff cover which protects the plant cell and gives it its structure.
3. The \_\_\_\_\_ is a thin structure with selective permeability to different materials.
4. The \_\_\_\_\_ is a fluid-filled space contains the cell sap (water, food, waste).
5. A \_\_\_\_\_ breaks down invaders and old cells.
6. The \_\_\_\_\_ network of interconnected membranes that helps move substance within the cell.
7. The \_\_\_\_\_ is the control center of the cell where all the genetic material is stored.

**Question 2: Put the following processes in order, to explain the role of the Golgi apparatus in the cell (2 Points)**

- ( ) the protein is modified
- ( ) a protein is synthesized
- ( ) the protein is packed or stored
- ( ) the protein enter the Golgi apparatus

**Question 3: Observe the plant cell diagram below, then answer the related questions. (4 points)**



- **This is a plant cell. Name three structures labeled in this picture that are found in most plant cells but not animal cells.**

1 \_\_\_\_\_

2 \_\_\_\_\_

3 \_\_\_\_\_

- **Name the part of the cell in which photosynthesis takes place.**

\_\_\_\_\_

**Question 4: Circle the right answer(s). (5 points)**

**1. Eukaryotic cells (choose all correct answers)**

- found in single cellular organisms only
- contain membrane bound nucleus
- found in single cellular and multicellular organisms

**2. Cells are specialized because**

- they have special kinds of nucleus
- they do different functions
- Cells are not specialized, and they are all the same in the human body.

**Question 2: Which of the following pairs are correctly paired?**

- Cell wall: protection and shape
- Mitochondria: energy supply
- Chloroplast: storage
- Cell membrane: protein synthesis

**Question 5: Arrange these words in the correct order from the smallest to the largest structure. (2 points)**

tissue, system, organ, cell

**Good Luck!**